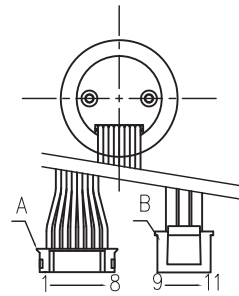
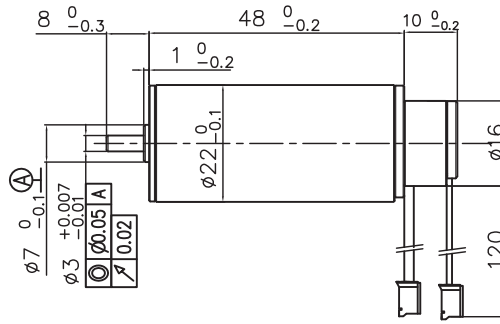
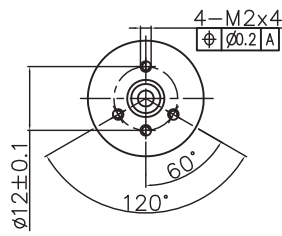


2248EM 空心杯伺服电机

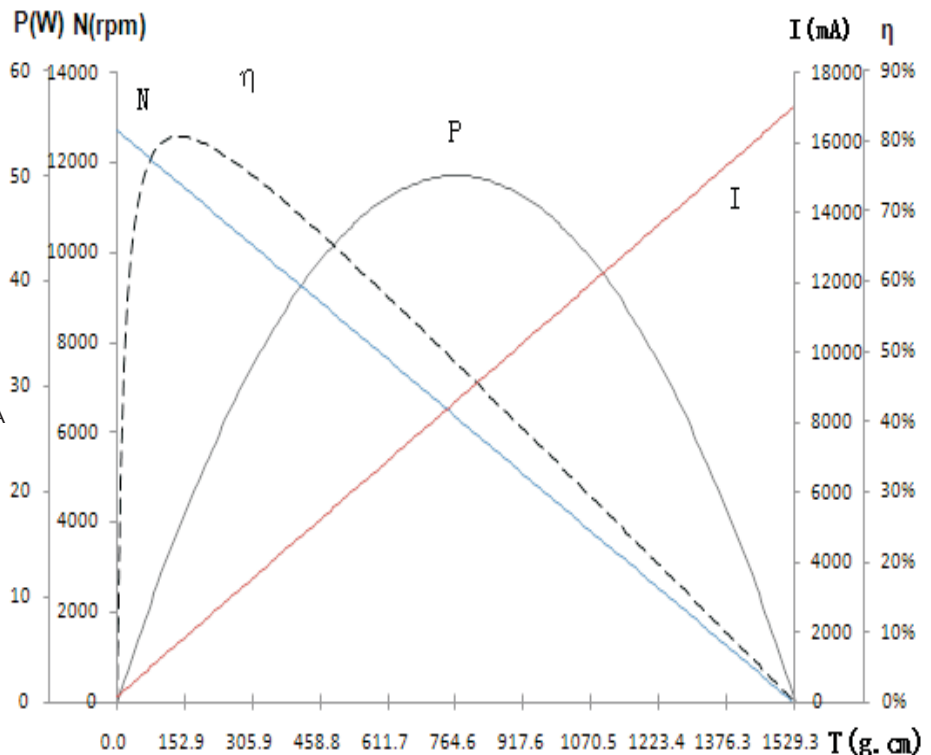


典型应用 Typical Applications: 舵机、智能小机器人

电机参数 (Motor data)		01	02	03	04
额定电压下数值 (Values at nominal voltage)					
1 额定电压 (Nominal voltage)	v	12	24	36	48
2 空载转速 (No load speed)	rpm	12740	12650	13122	13368
3 空载电流 (No load current)	mA	175	99	80	67
4 额定转速 (Nominal speed)	rpm	11657	11638	12000	12365
5 额定转矩 (最大连续转矩) (Nominal torque)	mNm	13	13	13	13
6 额定电流 (最大连续电流) (Nominal current)	A	1.61	0.80	0.57	0.44
7 堵转转矩 (Stall torque)	mNm	151.17	157.30	151.00	170.38
8 堵转电流 (Stall current)	A	17.14	8.85	5.88	5.06
9 最大效率 (Max efficiency)	%	82	81	80	80
电机常数 (Motor constant)					
10 相间电阻 (Terminal resistance)	Ω	0.70	2.71	6.12	9.47
11 转矩常数 (Torque constant)	mNm/A	8.82	17.76	25.69	33.62
12 速度常数 (Speed constant)	rpm / V	1062	527	365	279

其它特性参数 Other characteristic parameters 01电机曲线图

- 13 环境温度范围 (Ambient temperature) -40 - 100°C
- 14 绕组最高允许温度 (Max permissible winding temperature) 120°C
- 15 最高允许转速 (Max permissible speed) 30000rpm
- 16 电极磁极对数 (Number of the pole pairs) 1
- 17 相数 (Number of pole pairs) 3
- 18 电机质量 (Weight) 85g



连接端子A: JST PHR-8 PH2.0
UL1332 PTEF AWG26
1-HA、2-HB、3-HC、4-GND、5-VCC、6-Z、7-B、8-A
连接端子B: VHR-3N PH3.96
UI1430 AWG20 PVC
7-MA(blue) 8-MB(black) 9-MC(white)
编码器:
输入电压: DC3.3V
输出信号: 增量式 (ABZ) TTL
分辨率: 1~256PPR(可选)